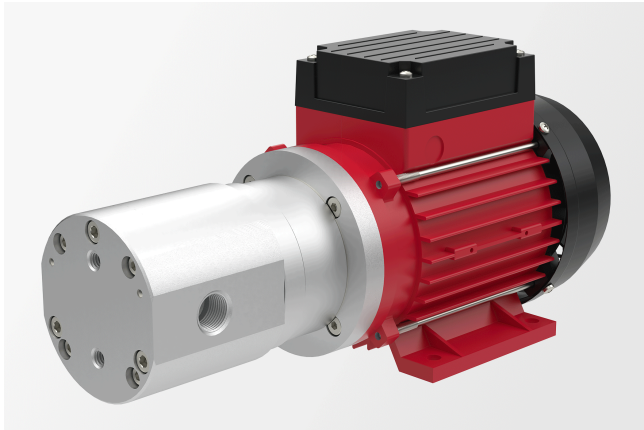


## Product data sheet

### Gear pump

Bracket pump with magnetic coupling



## Description

- » Gear pump
- » Bracket pump
- » Magnetic coupling
- » Hermetically sealed

## Markets and applications

### E-mobility

- » HPC – High-power charging (quick charging stations)

### Industrial cooling

- » Welding appliances
- » Plasma cutters
- » Industrial lasers

### Road and rail

- » Fuel pumping

## Get in touch with us!

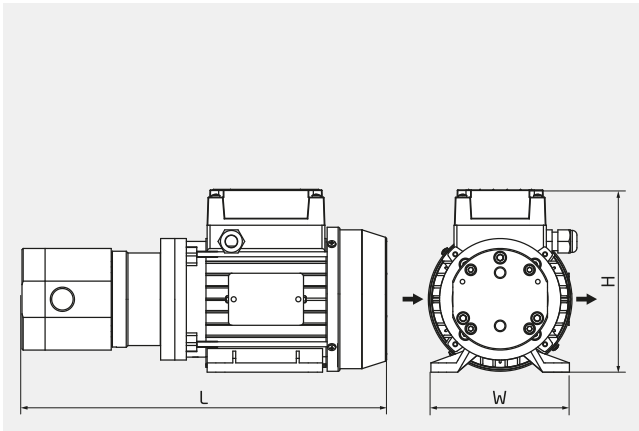
Speck Pumpen Systemtechnik GmbH  
Regensburger Ring 6-8  
91154 Roth  
Deutschland

### Make a non-binding enquiry

[info@speck.de](mailto:info@speck.de)

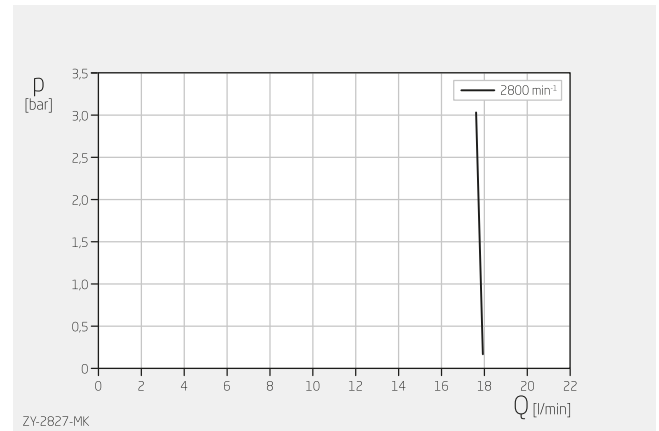
## Technical data

International system of units, alternating current 50 Hz



H	158 mm
W	120 mm
L	316 mm

Dimensions may vary depending on the design.

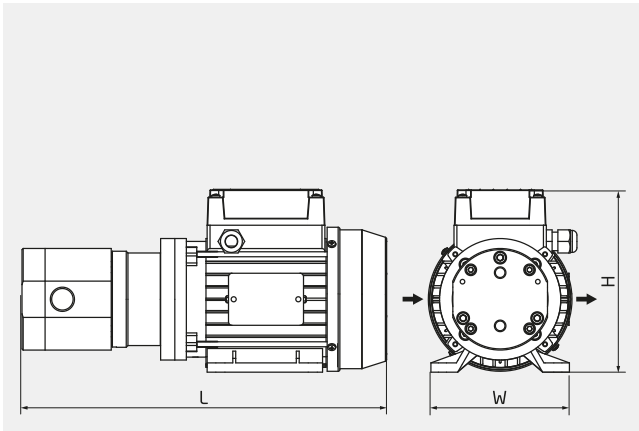


Specifications apply for diesel at 20°C and nominal speed.

Product type	Gear pump
Shaft sealing/coupling	None/magnetic coupling
Pump design	Bracket pump
Typical media	Oil and fuel min. -40 °C, max. +80 °C
Self-priming	Yes
Variable speed	Frequency-converter-compatible motor on request
Outlet pressure	0.5-3.1 bar
Flow rate	18-18 l/min
Nominal pressure	PN 10
Motor current type	1~ 3~
Type of motor	Asynchronous motor
Nominal motor power	0.25 kW
Nominal motor speed	2800 rpm
Suction-side connection design	Threaded
Suction-side connection size	G 1/2"
Pressure-side connection design	Threaded
Pressure-side connection size	G 1/2"
Explosion protection	None

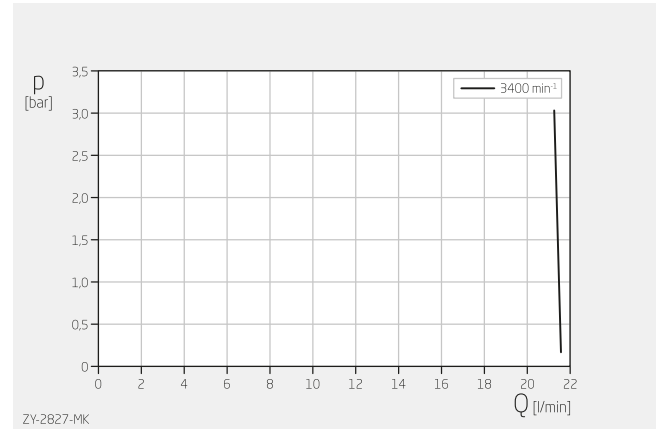
## Technical data

International system of units, alternating current 60 Hz



H	158 mm
W	120 mm
L	316 mm

Dimensions may vary depending on the design.

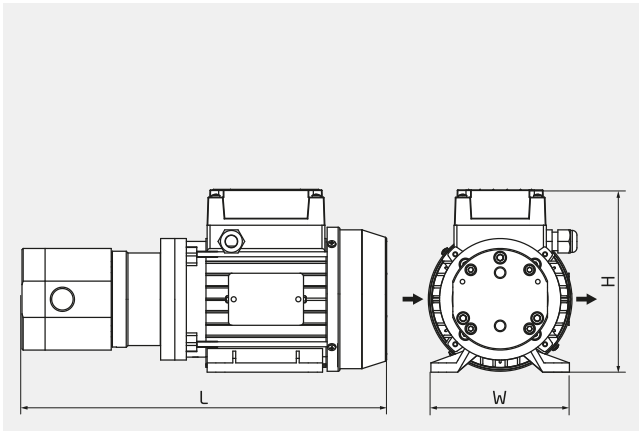


Specifications apply for diesel at 20°C and nominal speed.

Product type	Gear pump
Shaft sealing/coupling	None/magnetic coupling
Pump design	Bracket pump
Typical media	Oil and fuel min. -40 °C, max. +80 °C
Self-priming	Yes
Variable speed	Frequency-converter-compatible motor on request
Outlet pressure	0.5-3.1 bar
Flow rate	21-22 l/min
Nominal pressure	PN 10
Motor current type	1~ 3~
Type of motor	Asynchronous motor
Nominal motor power	0.3 kW
Nominal motor speed	3500 rpm
Suction-side connection design	Threaded
Suction-side connection size	G 1/2"
Pressure-side connection design	Threaded
Pressure-side connection size	G 1/2"
Explosion protection	None

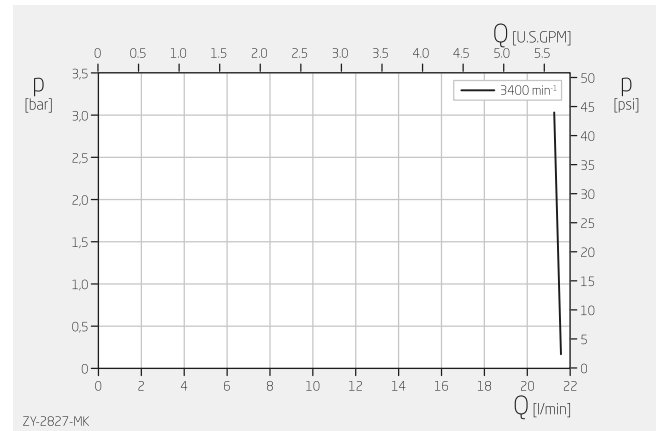
## Technical data

Anglo-American system of measurement, alternating current 60 Hz



H	6,22 inch
W	4,72 inch
L	12,44 inch

Dimensions may vary depending on the design.



Specifications apply for diesel at 68°F and nominal speed.

Product type	Gear pump
Shaft sealing/coupling	None/magnetic coupling
Pump design	Bracket pump
Typical media	Oil and fuel min. -40 °F, max. +176 °F
Self-priming	Yes
Variable speed	Frequency-converter-compatible motor on request
Outlet pressure	7–45 psi
Flow rate	5.5–5.7 USGPM
Nominal pressure	PN 10
Motor current type	1~ 3~
Type of motor	Asynchronous motor
Nominal motor power	0.4 HP
Nominal motor speed	3500 rpm
Suction-side connection design	Threaded
Suction-side connection size	G ½"
Pressure-side connection design	Threaded
Pressure-side connection size	G ½"
Explosion protection	None